

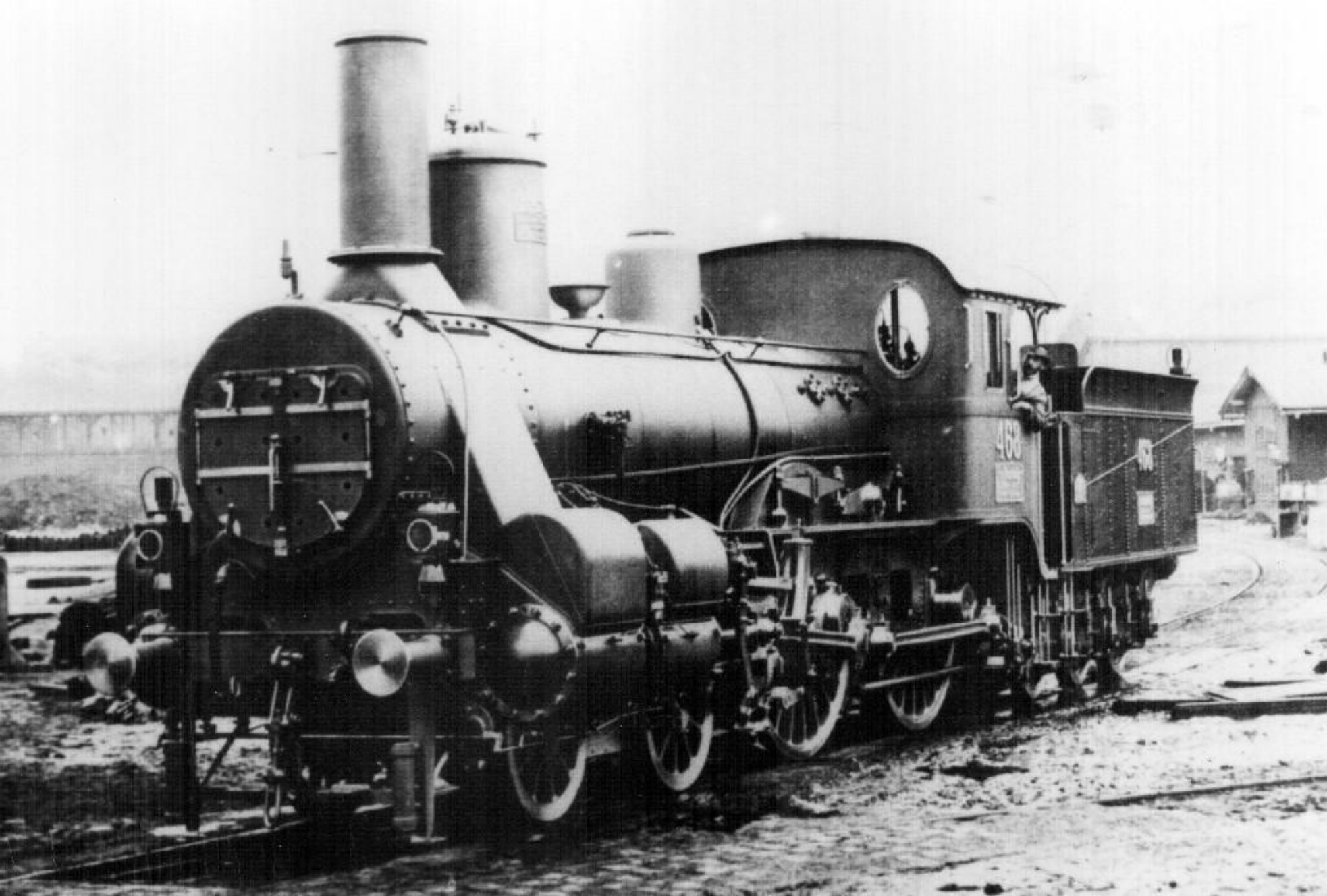
M.A.V. Gr
128642

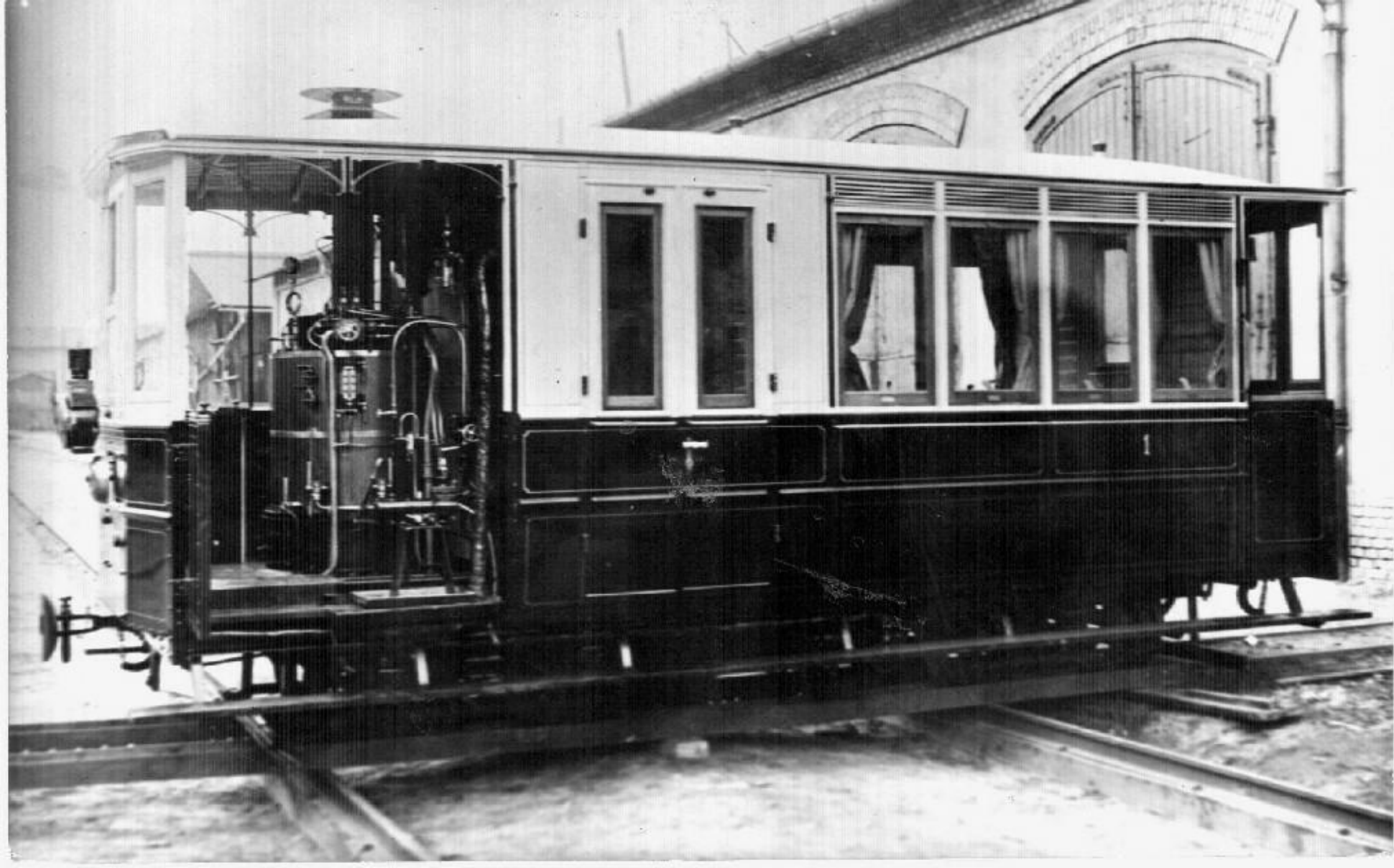
Industrielle Waggon
Fabrik
Pilsen

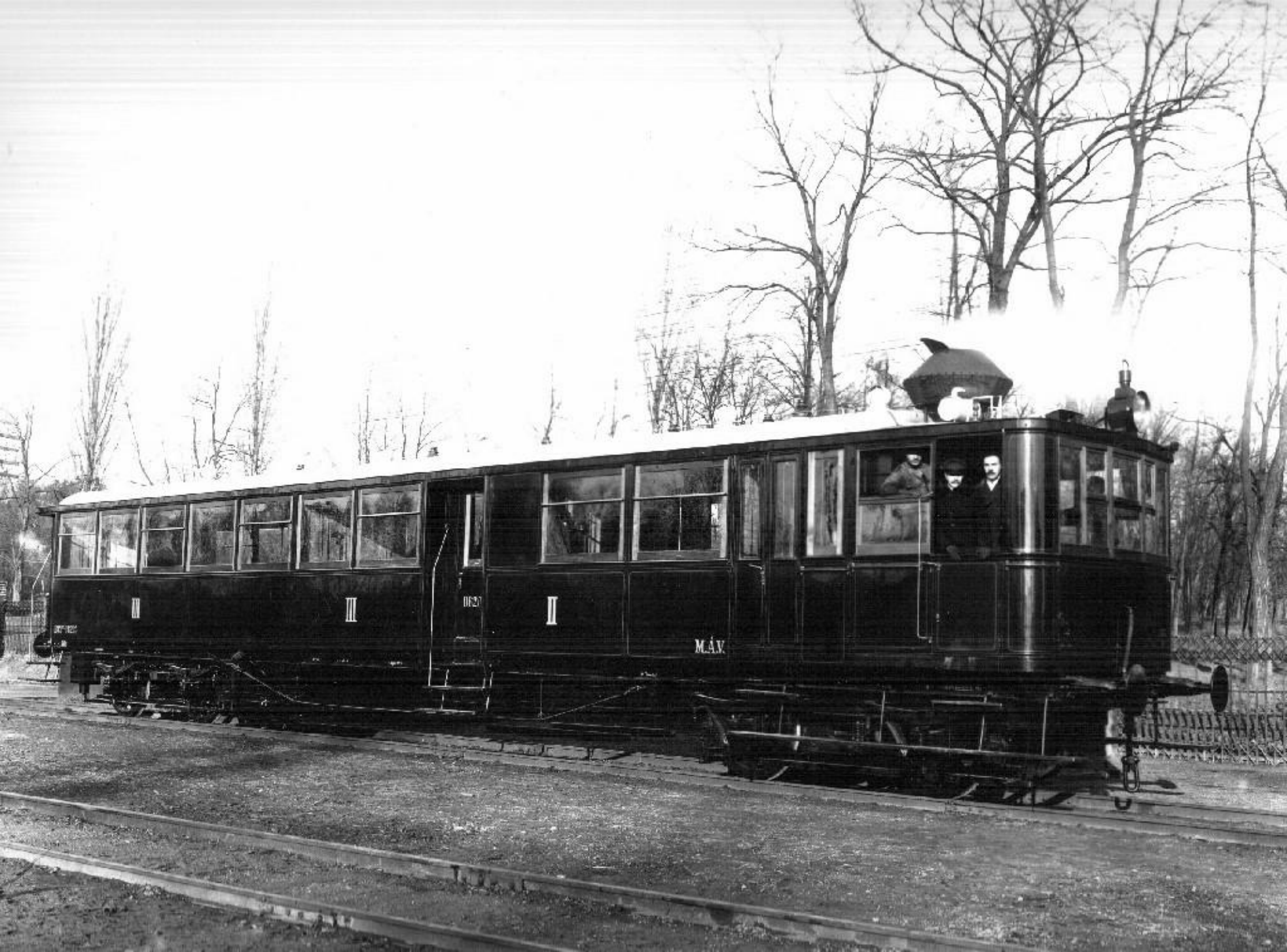


Böhmische
Lokomotiv
Fabrik

128642



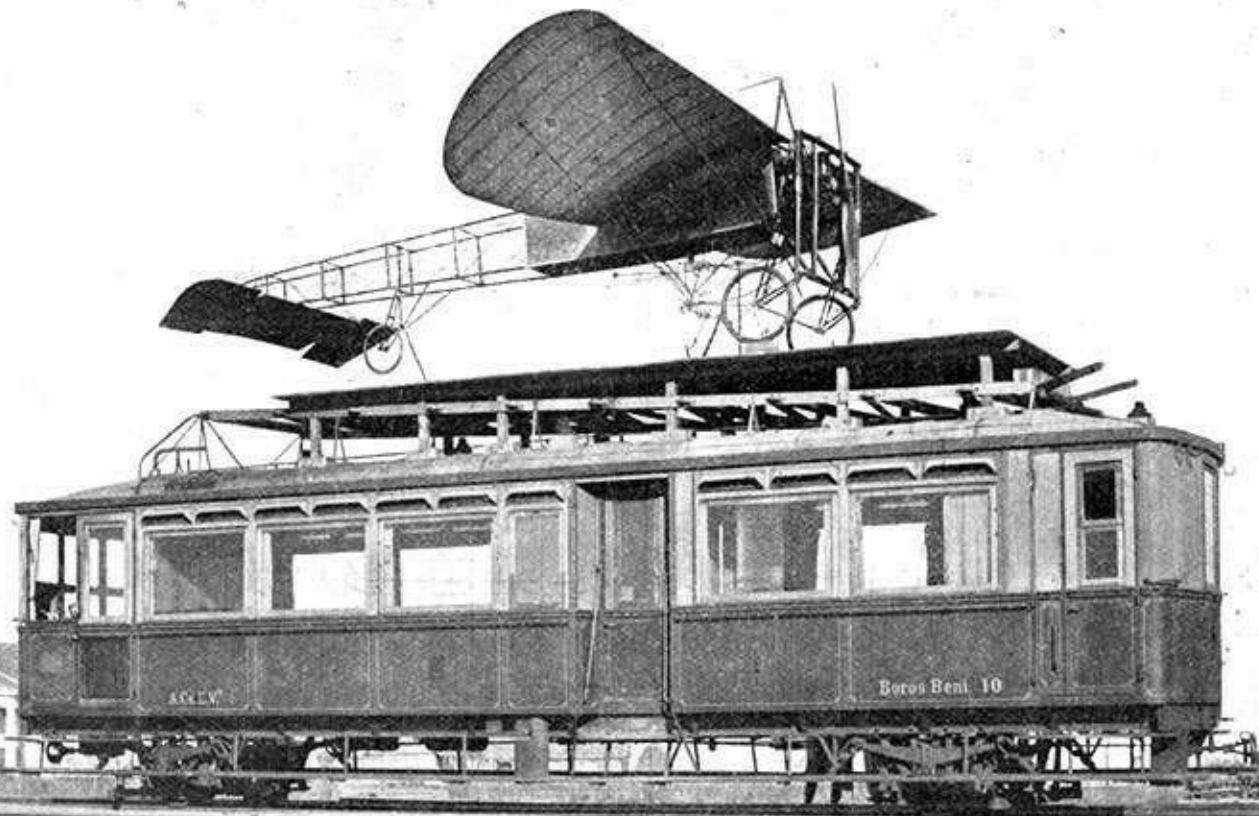


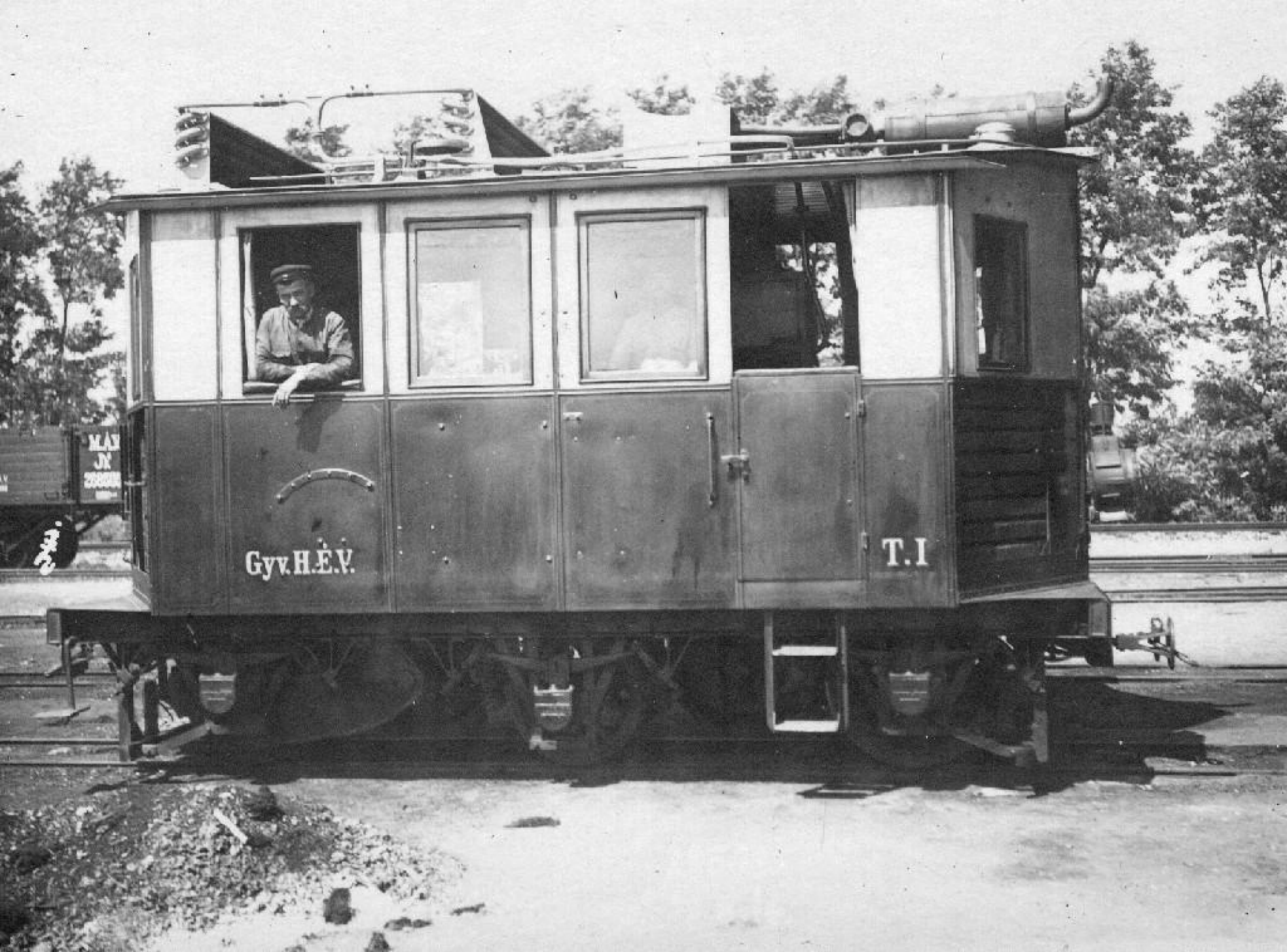


0627

II

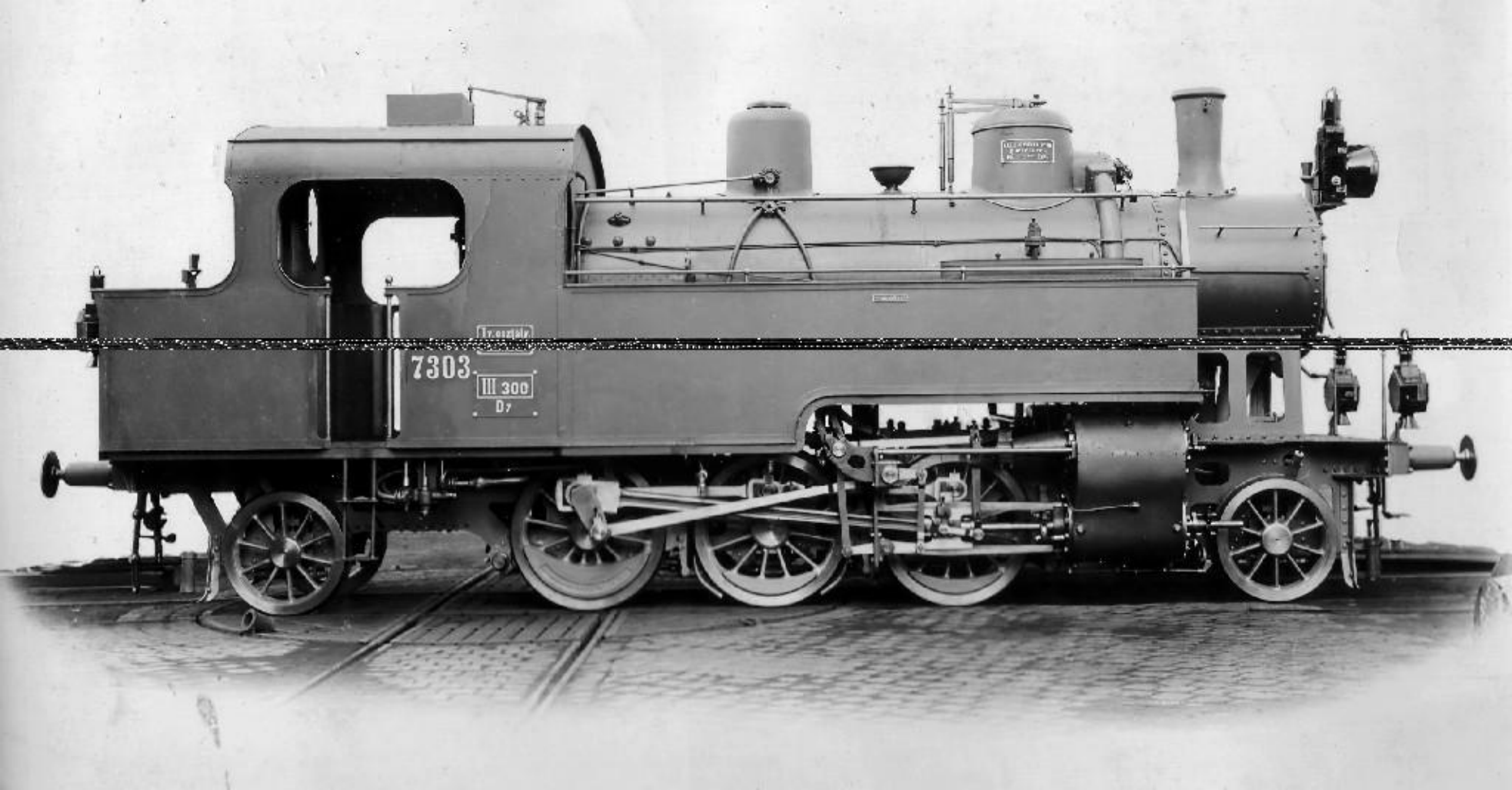
M.A.V.





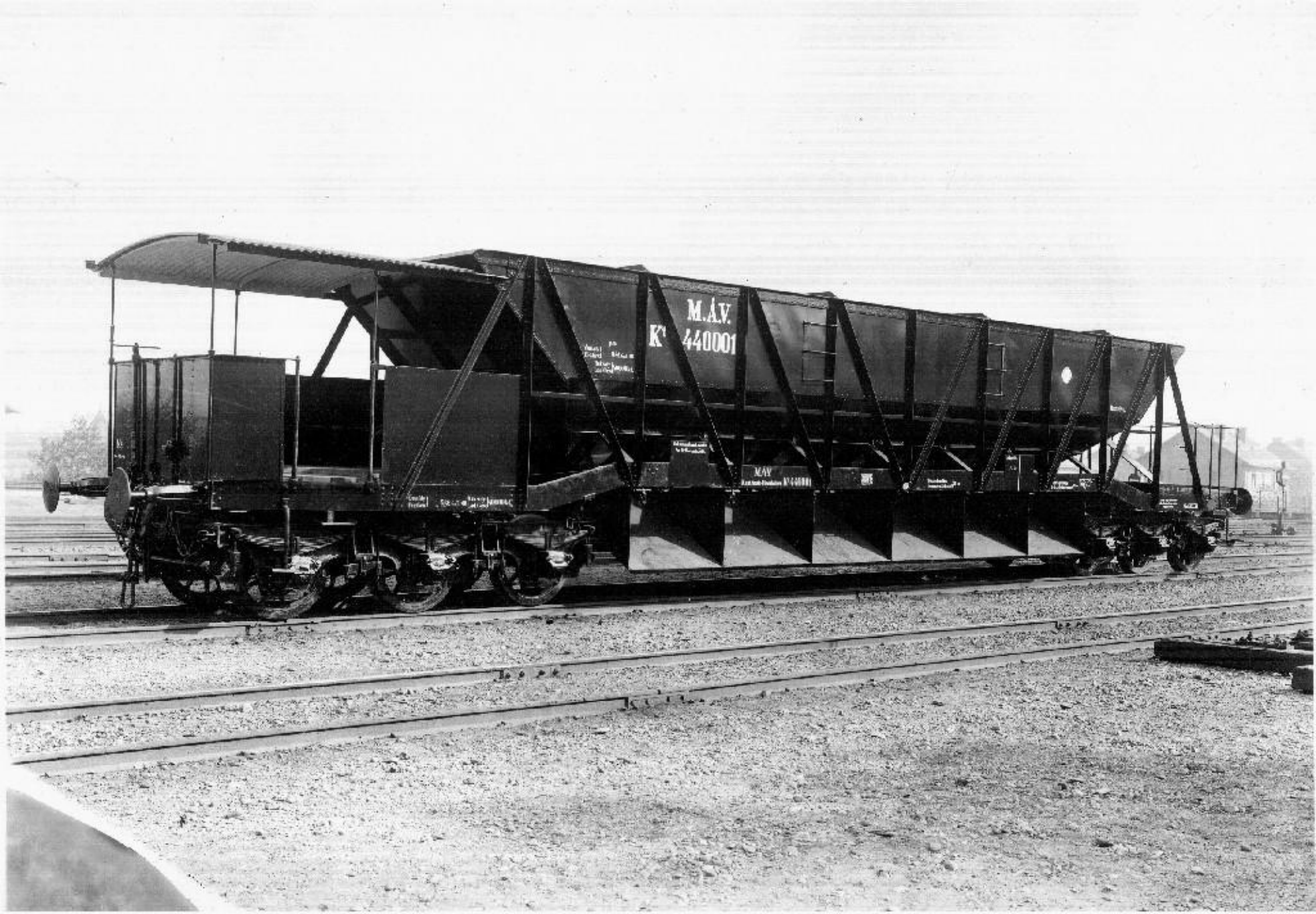
Gyv.H.E.V.

T.I



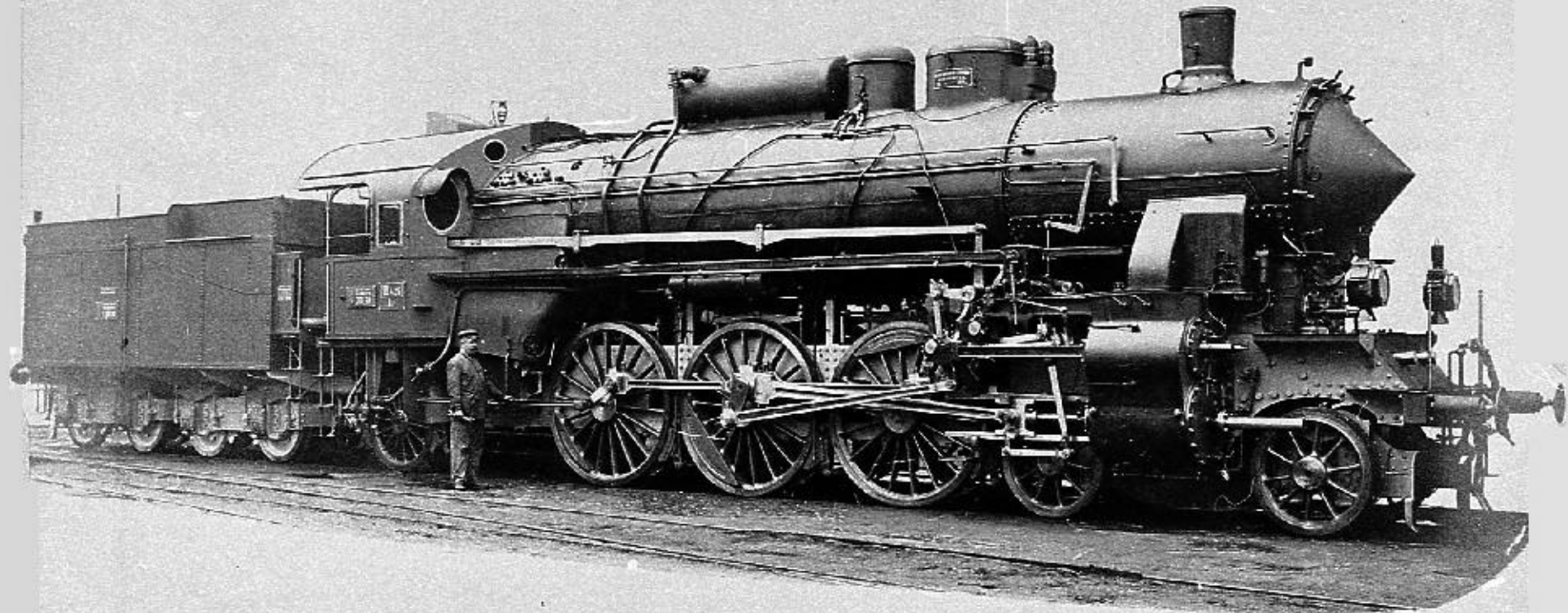
7303

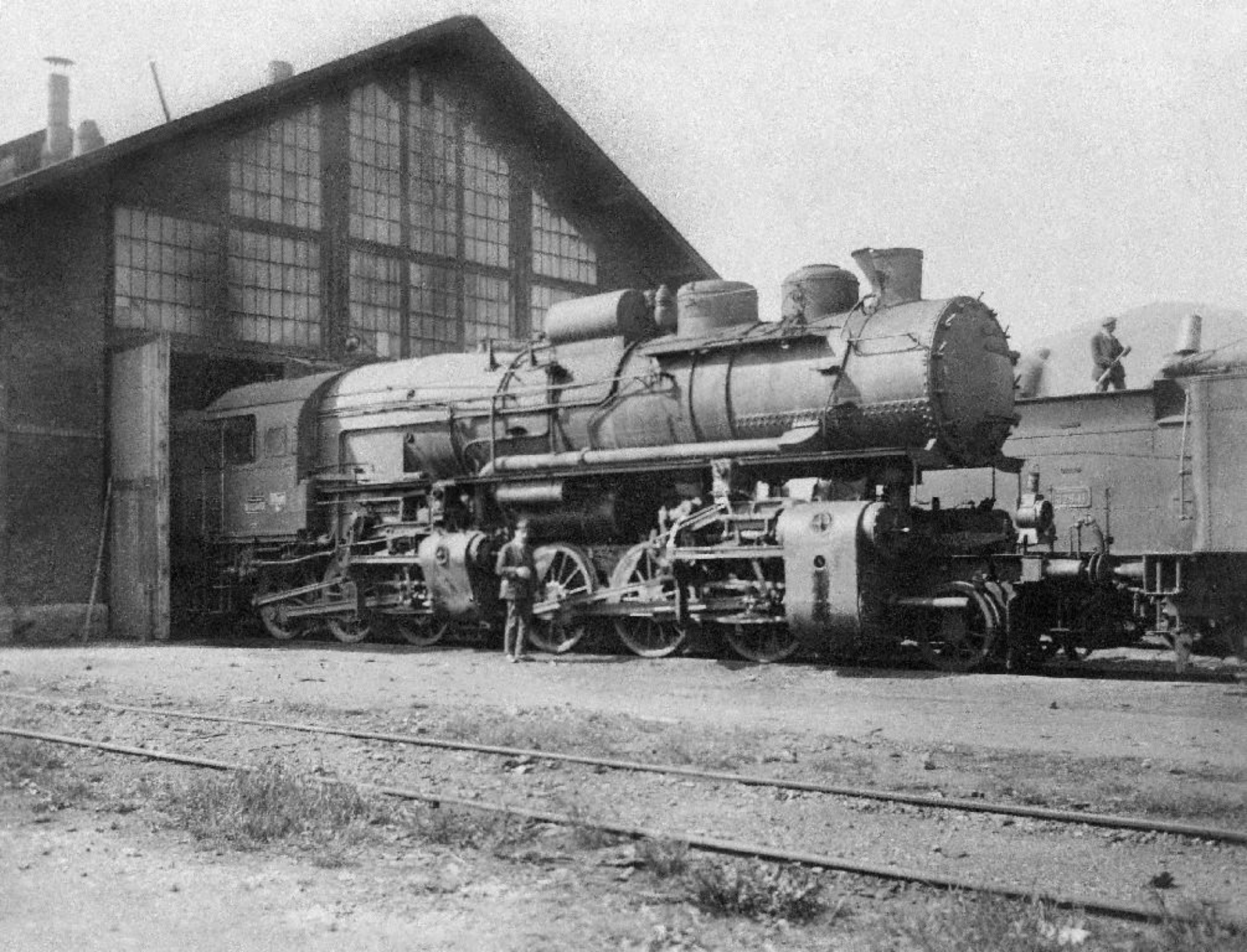
III 300
D7



M.A.V.
K 440001

M.A.V.
K 440001





M.A.V. Km 158357

1000 mm
1000 mm

158357

Capacity
Eld (Gross) 0 t
Eld (Net) 20000 kg
Eld (Gross) 20 t
Eld (Net) 18 t
Eld (Gross) 20 t
Eld (Net) 18 t
Eld (Gross) 20 t
Eld (Net) 18 t

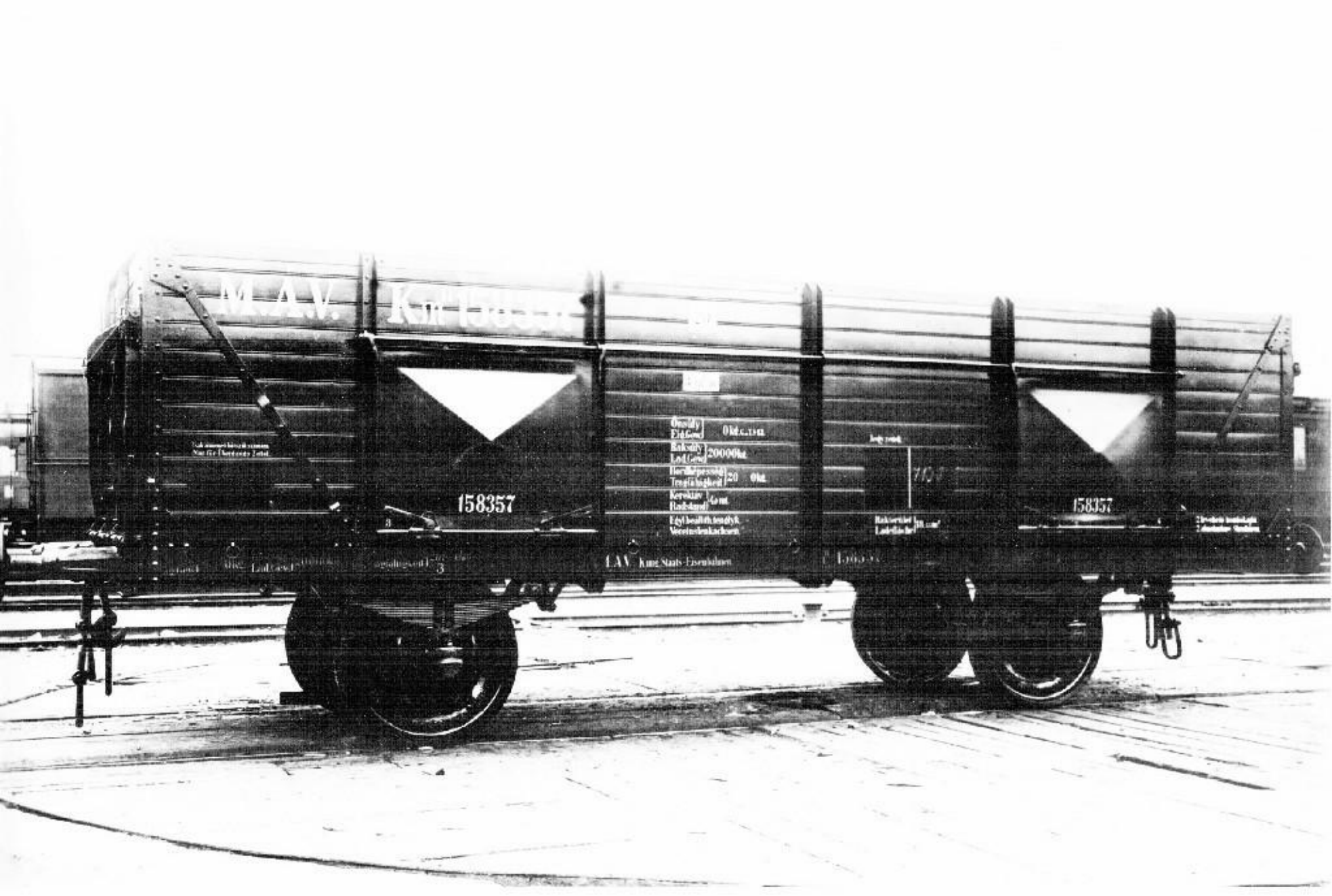
LAV Kuni Stab Eisenbahn

1000 mm

1000 mm
1000 mm

158357

1000 mm
1000 mm



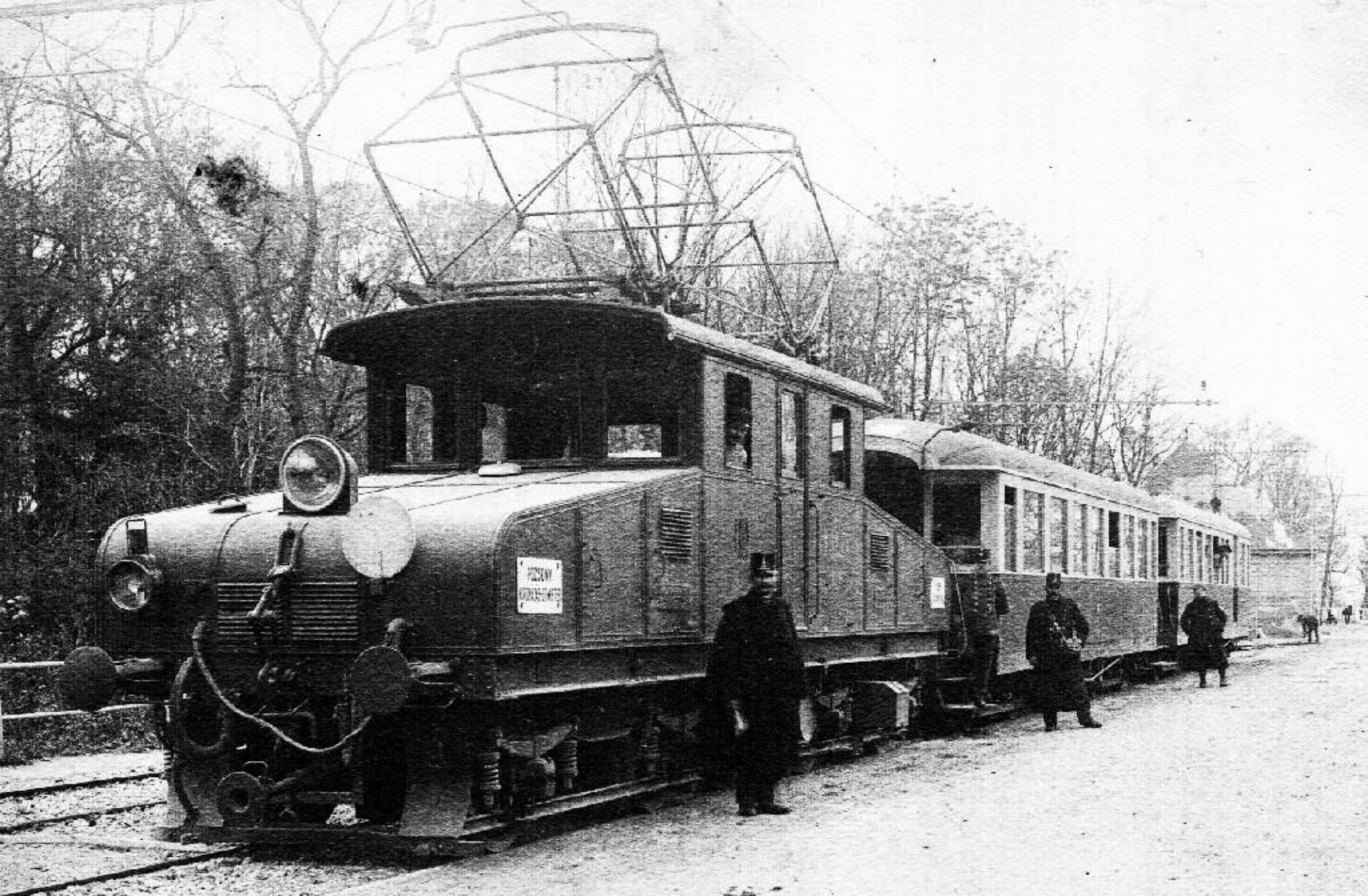


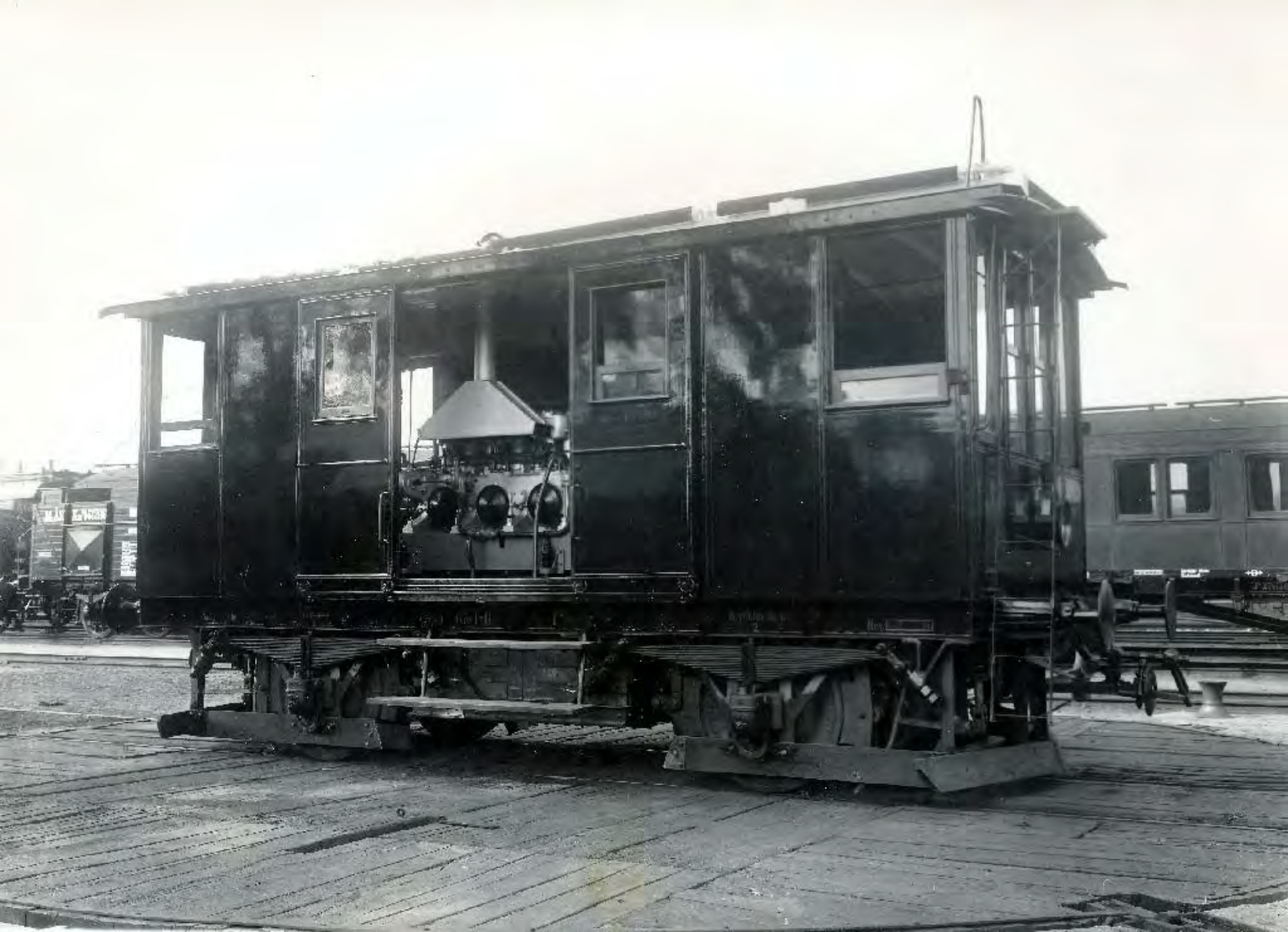
C 8204686

17000 IK

EL JENI

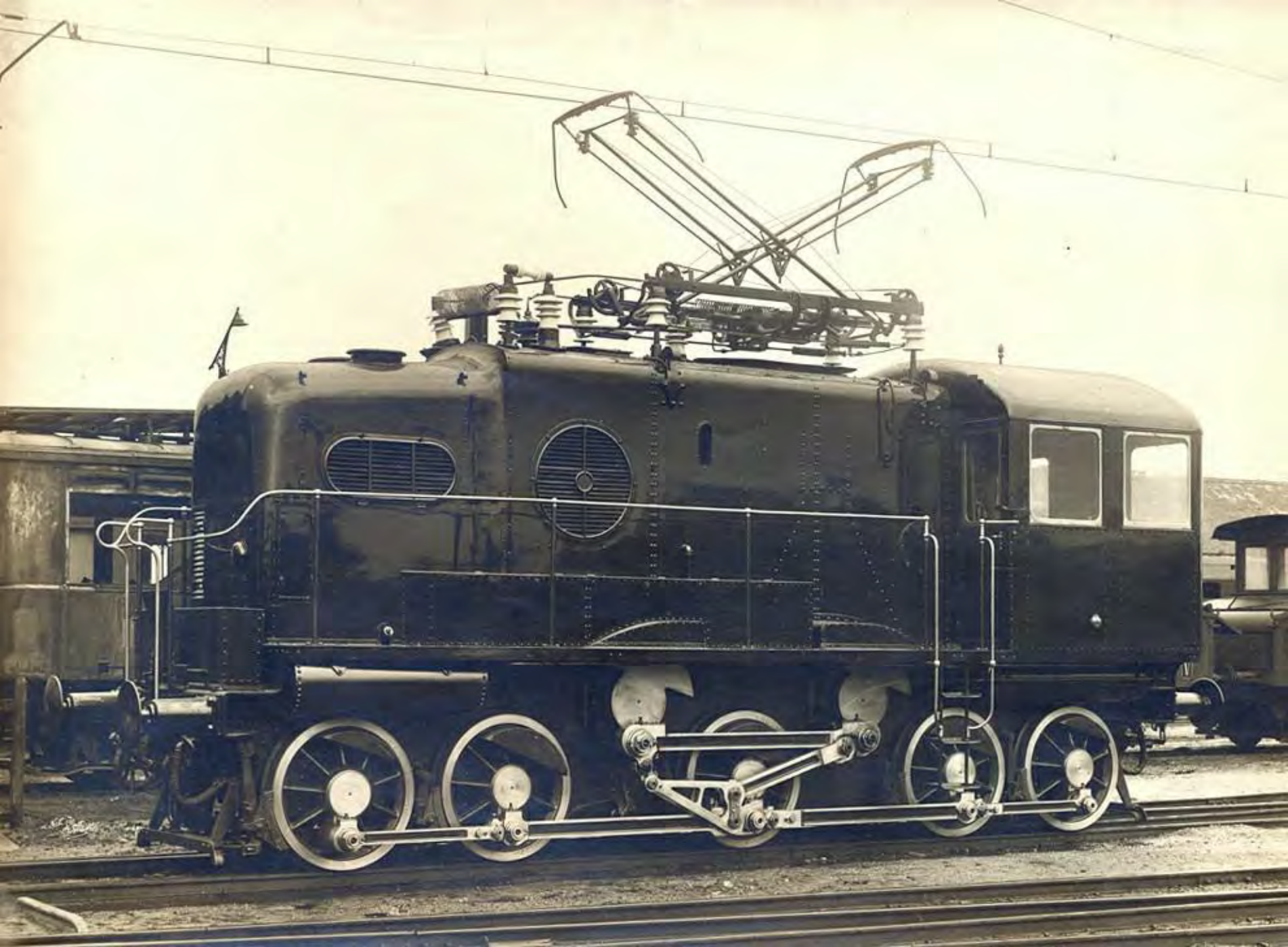
SAZ. EN. JENI
SAB. EN. JENI

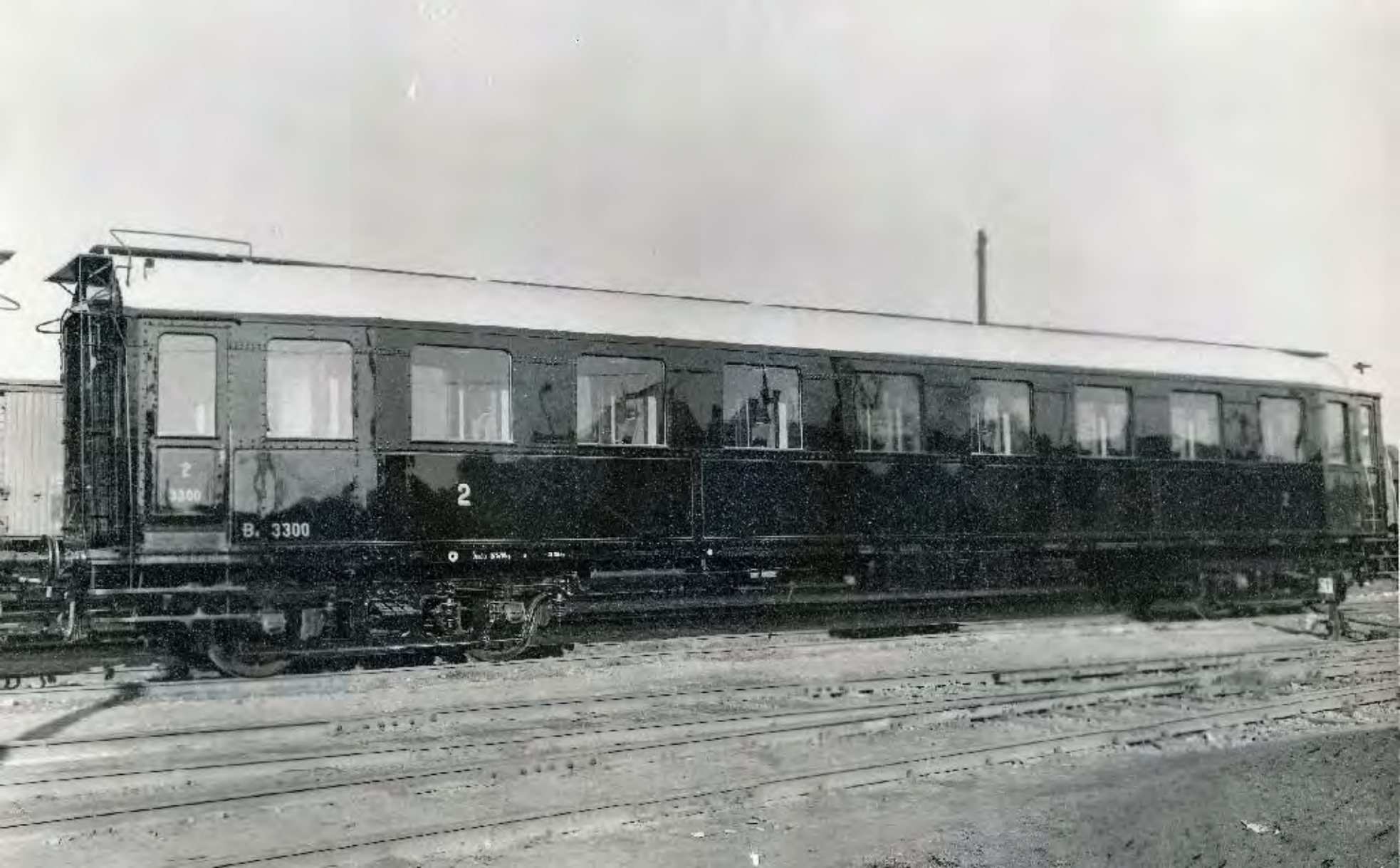


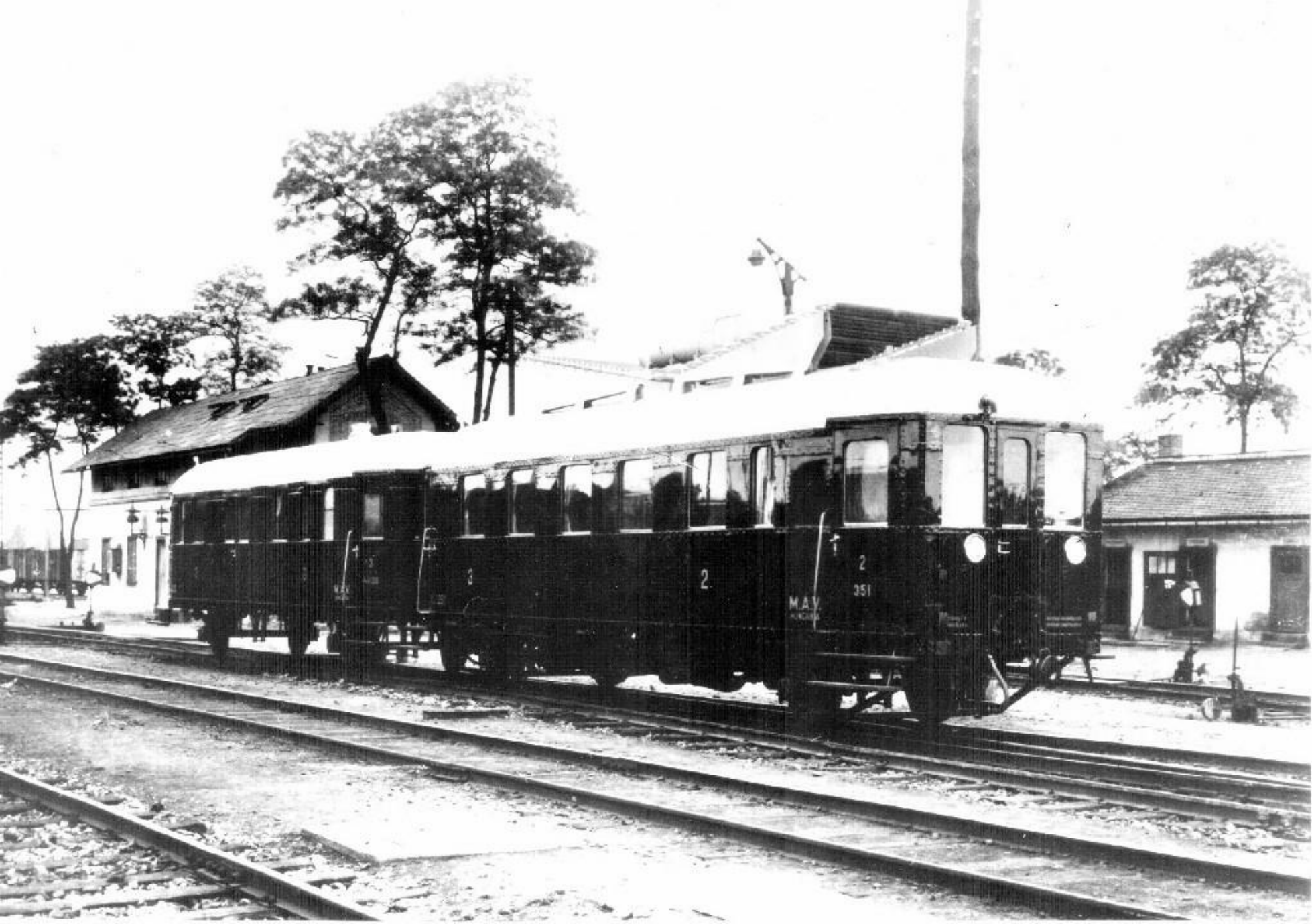


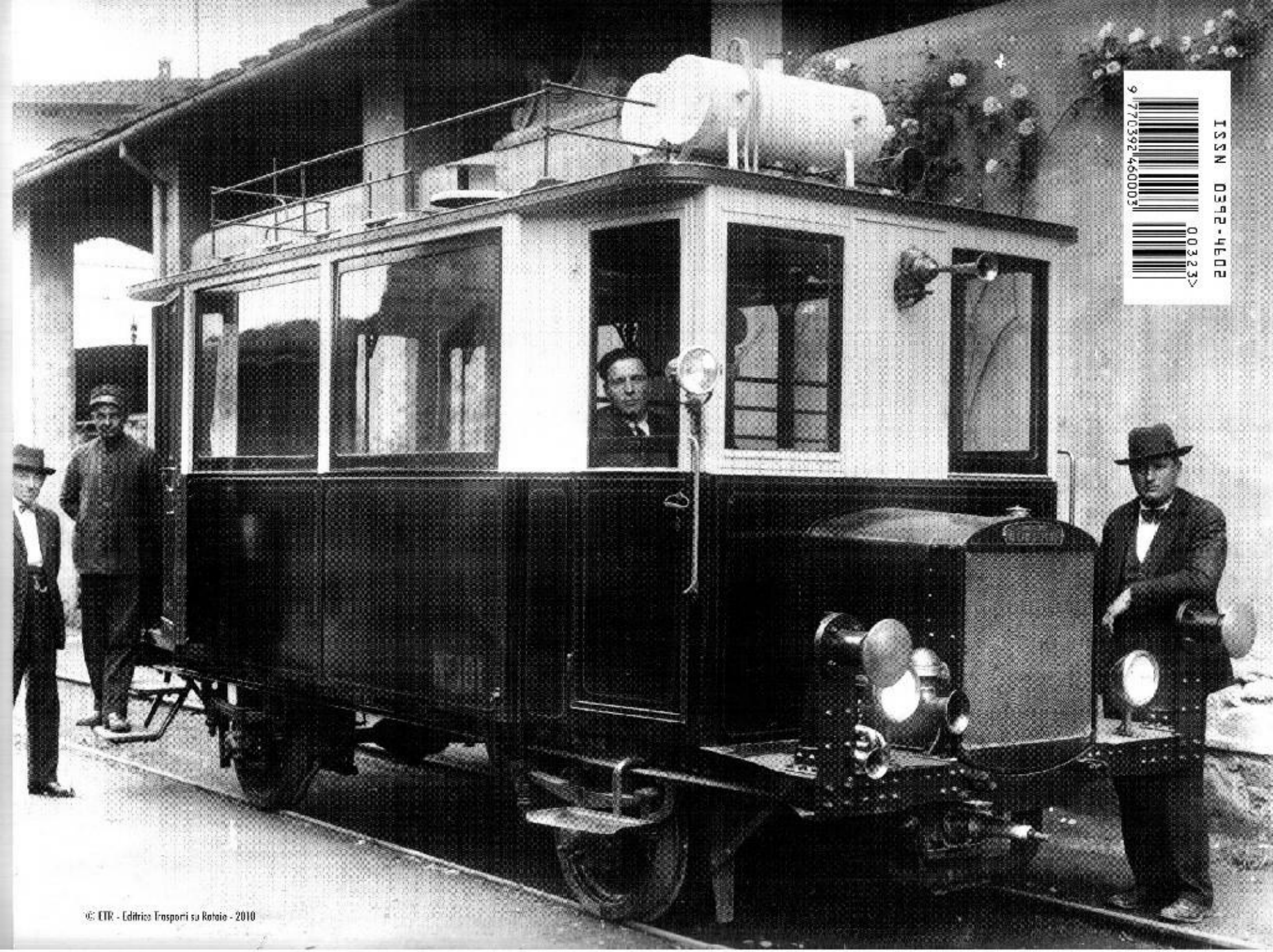












ISSN 0392-4602
00323>
9 770392 460003



2

313

BC 313

2

3

411

